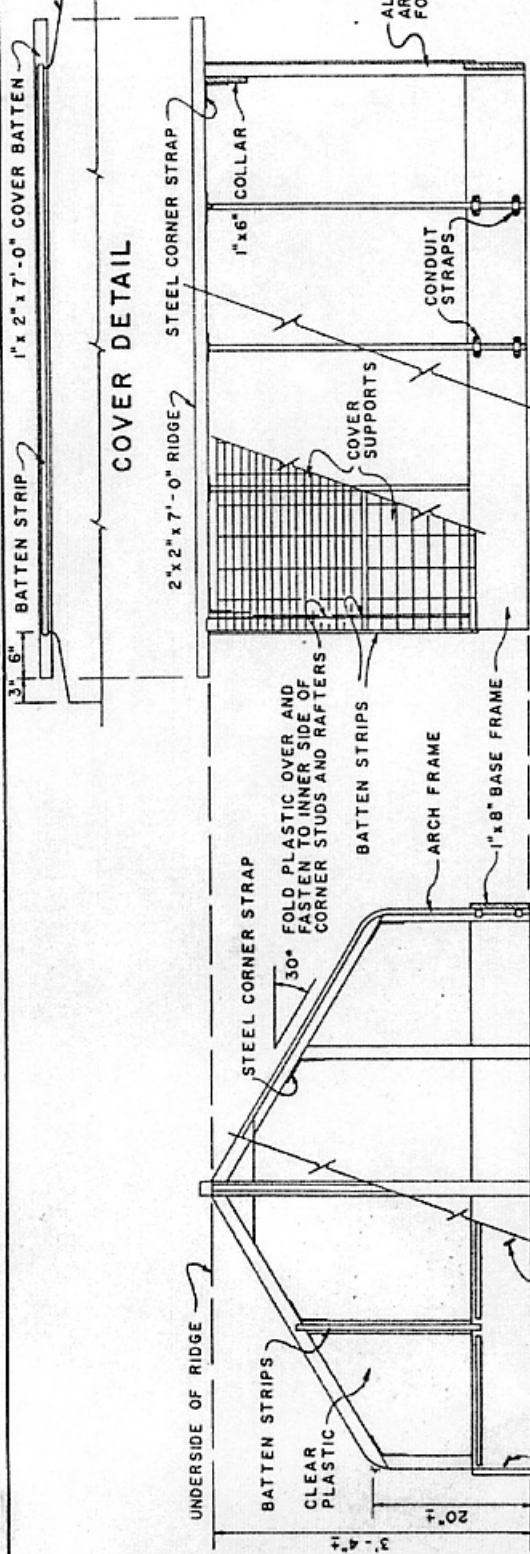
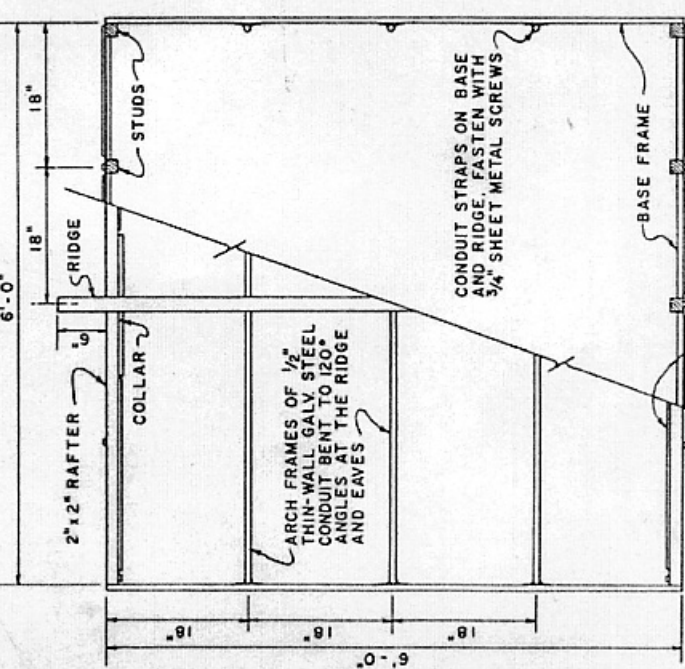


CLEAR PLASTIC COVER WITH CORNERS NOTCHED. FOLD PLASTIC AROUND 1" x 2" AND FASTEN THRU WOOD OR FIBER BATTEN STRIPS.

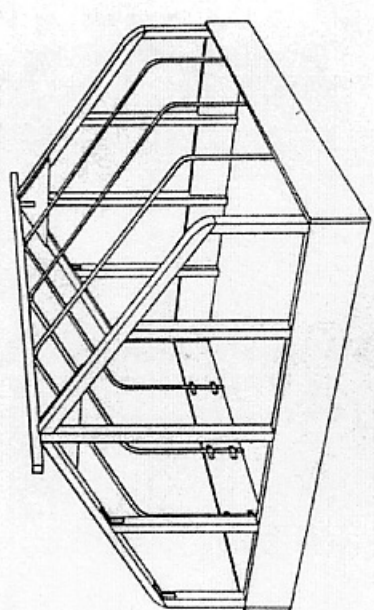


COVER DETAIL

END VIEW
CUT AWAY



TOP VIEW
CUT AWAY TO SHOW CONSTRUCTION



PERSPECTIVE VIEW
FRAMING ONLY

MATERIAL LIST

ITEM	QUANTITY	SIZE	LONG
BASE FRAME	4	1" x 8"	6'-0"
COLLARS	1	1" x 6"	2'-8"
RAFTERS	4	2" x 2"	7'-0"
STUDS (CENTER)	2	"	3'-4"
STUDS (OTHER)	4	"	4'-0"
COVER BATTENS	4	1" x 2"	7'-0"
ARCH BATTENS	3	1/2" DIA.	10'-0"
CONDUIT STRAPS	10	3/8" x 1" x 6"	
CORNER STRAPS	2	3'-0" x 6'-6"	
PLASTIC (ENDS)	2	3'-0" x 7'-6"	
COVER SUPPORTS	2	1'-4" x 6'-0"	
BATTEN STRIPS	8	1'-4" x 62'-0"	
SCREW HOOKS	8		
FASTENINGS	1	SEE NOTES	
SOIL HEATING CABLE	1	360 W	120' .0"

DUE TO POSSIBLE VARIATIONS IN ANGLES WHEN THE CONDUIT IS BENT FOR ARCH FRAMES, CHECK THE HEIGHTS SHOWN USING AN ARCH FRAME AS A TEMPLATE.

ALL WOOD SHOULD BE TREATED WITH PRESERVATIVE AFTER CUTTING AND BEFORE ASSEMBLY.

METAL PARTS AND FASTENINGS TO BE GALVANIZED OR OTHERWISE RESISTANT TO CORROSION.

METAL PARTS TO BE FASTENED WITH SCREWS.

WOOD PARTS MAY BE FASTENED WITH SCREWS OR WITH NAILS, CLINCHED WHERE POSSIBLE.

PLASTIC MAY BE FASTENED THRU THE BATTEN STRIPS WITH NAILS, SCREWS OR STAPLES.

SIDE AND TOP COVER SUPPORTS ARE 2 x 4 INCH WELDED WIRE MESH, HOOKED TOGETHER IN PAIRS AND HINGED LOOSELY TO THE RIDGE WITH STRONG CORD.

SCALE: 0 1 FT

COOPERATIVE EXTENSION WORK IN AGRICULTURE AND HOME ECONOMICS

STATE OF TENNESSEE

UNIVERSITY OF TENNESSEE

AGRICULTURAL ENGINEERING DEPARTMENT

AND

UNITED STATES DEPARTMENT OF AGRICULTURE COOPERATING

HOTBED & PROPAGATING FRAME

USDA '64 EX. 5971 SHEET 1 OF 1